

BCK Holland B.V.

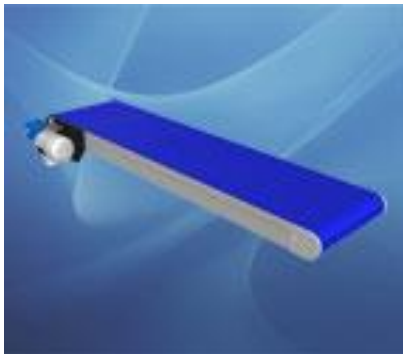
Spuiweg 24
5145 NE Waalwijk
The Netherlands

[T] +31(0)416 673 880
[F] +31(0)416 673 888
sales@bckholland.com
www.bckholland.com

KvK : 18076783
VAT nr : NL813897075B01
Bank nr : ING 67.65.07.611
BIC : INGBNL2A
IBAN : NL32INGB0676507611

BCK C83 Configurator 360 Manual

Versie 1.0



Inhoud

| | |
|---|---|
| 1. General..... | 2 |
| 2. Accessibility Configurator | 2 |
| 3. Configurator C83 - flat aluminium chain conveyor | 2 |
| 4. Configuration of the 3D model..... | 3 |
| 5. Set Limits | 4 |
| 6. Options configurator | 5 |

1. General

The BCK Configurator 360 aims to quickly configure 3D models and download them for use in custom 3D designs. The 3D models can be downloaded as STEP or SAT file.

It is also possible to request an advice or quotation of the configured model.

Standards were assumed when designing the configurator. There are many more options outside the standards. If you want a different belt color, the motor or legs of the support in a different location, shorter side guides, etc., please contact the sales department.

No rights can be derived from the configured models. Upon a quotation request, your configured model will be assessed by BCK Holland B.V.

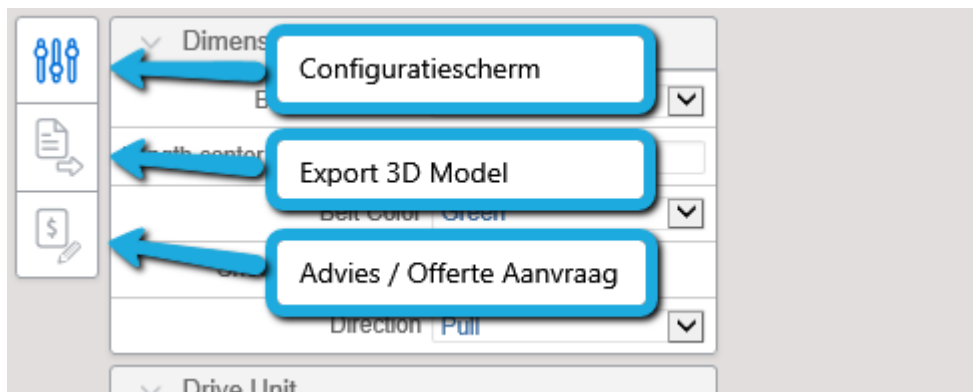
2. Accessibility Configurator

The configurator is accessible from the BCK website where no registration or login is required. The direct link to the C83 configurator is: <https://www.bckholland.com/en/configurator-c83-flat-straight> .

3. Configurator C83 - flat aluminium chain conveyor

After you have clicked on the link you will be redirected to the BCK Holland website.

If you do not see the configurator immediately, press F5 to refresh the page. The first loading time takes on average 10 to 20 seconds. On the left you will find the input screen by which you can configure the belt conveyor.

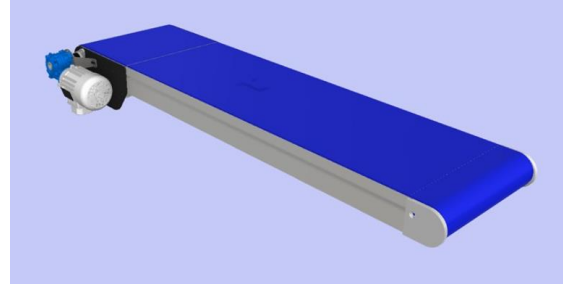


1. **Configuration panel**, Control panel, this is open by default. If you have exported a 3D model or have made an Advice / Quotation request, you can call up the configuration screen again via this button.
2. **Export 3D Model**, This allows you to export your configured model to a STEP or SAT file.
3. **Advice / Quotation Request**, if you want advice whether your configured model meets the requirements and / or you want a quote, you can do that via this button. The configured model is then saved so that BCK Holland B.V. can assess it.

4. Configuration of the 3D model

The fully expanded configuration screen looks like this:

| | |
|------------------------------|-------------------------------------|
| Dimensions and Color | |
| Belt Width (mm) | 400 |
| Length center to center (mm) | 1500 |
| Belt Color | Blue |
| Show Arrow on Belt | <input checked="" type="checkbox"/> |
| Drive Unit | |
| Motor Position | D10 Left |
| Support | |
| Support | None |
| Height (mm) | 900 |
| Feet \ Wheel | Feet |
| Side Guide | |
| Guide Bracket | None |
| Guide Type | None |



By making a choice from the drop-down menus or changing a value, the 3D model will be adjusted immediately. This takes around 1 to 10 seconds.

This direct adjustment is necessary because further options depend on the choices made. For example, it is only possible to select the LT24 support with a 70 mm bandwidth.

From a belt width of 400 mm, all types of supports can be selected.

5. Set Limits

A number of rules have been set in the configurator according to our standards. Outside these standards, more is possible. If you are unable to configure your desired model due to limitations of the standards, please contact the sales department of BCK Holland B.V.

If you have a 3D Design program such as Autodesk Inventor Professional, you can also adjust the downloaded 3D models.

Below you will find the table with the minimum and maximum values that have been processed in the configurator.

Pay attention! If you enter a value outside the limits, it will be adjusted automatically. Always check the values displayed in the configuration panel before you export the model.

| C83 Length Rules | Minimum (mm) | Maximum (mm) |
|-------------------------|---------------------|---------------------|
| Without support | 350 | 45.000 |
| With support | 1000 | 45.000 |

| C83 Width Rules | Minimum (mm) | Maximum (mm) |
|------------------------|---------------------|---------------------|
| General | 70 | 1.200 |
| LT22 Support | 400 | 1.200 |
| LT24 Support | 70 | 1.200 |
| LT30 Support | 400 | 1.200 |
| LT31 Support | 250 | 1.200 |

| C83 Height Rules | Minimum (mm) | Maximum (mm) |
|-------------------------|---------------------|---------------------|
| General | 320 | 1.500 |
| LT22 Support | 320 | 1.500 |
| LT24 Support | 320 | 1.500 |
| LT30 Support | 650 | 1.500 |
| LT31 Support | 650 | 1.500 |

6. Options configurator

A number of codes are being used in the configurator. Below you will find an explanation of what these codes mean. The below outlined only explains what is present in this configurator. For more options and further information please visit our website or contact BCK Holland B.V.

Standard widths

100-150-200-250-300-350-400-450-500-550-600-650-700-750-800-850-900-950-1000-1050-1100-1150 en 1200 mm.

Length (c.t.c.)

There are no standard lengths. The length can be accurately determined to the millimeter. On request, a positive and / or negative curve can also be incorporated in the frame.

Belt colors

The following colors are available in the configurator:

- Blue
- Green
- White

Other colors available upon request.

Transport direction

- Unidirectional

Motorreductor options (also possible with forced cooling)

- MR10 Standard motorreductor 230/400V, 50 Hz, IP55
- MR60 SEW motorreductor, 230/400V, 50 Hz, IP54

Motor position:

- D10 Left: Direct end drive left
- D10 Right: Direct end drive right

Support:

- LT22: H-formed aluminum profile construction
- LT24: Expanded H-formed aluminum profile construction
- LT30: Telescopic H-formed aluminum profile construction
- LT31: Expanded telescopic H-formed aluminum profile construction

The support can be mounted on leveling feet or castors.

Side Guide

Bracket:

- GMB10: Standard fixed bracket
- GMB20: Adjustable bracket for height and depth adjustment
- GMB30: Adjustable bracket for height, depth and angle adjustment

Side guide Rails:

- GR50: Side guide GR50 18 mm spherical white UHMPE
- GR55: Side guide GR55 18 mm flat white UHMPE
- GR60: Side guide GR60 40 mm flat green HMPE